

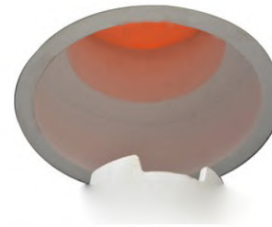


STS-120-17

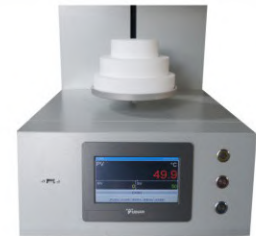
Small Bottom Loading Furnace

Main Features

- >Integrated compact Structure with elegant design
- >Chamber Materials: Vacuum forming ceramic fiber,which has the advantage of no powder drops off with high temperature , and saving energy more than 50%.
- >Yudian LCD Touch Screen Microprocessor based self-tuning PID control provides optimum thermal.
- >CE compliant.
- >Built-in RS485 port and USB adaptor as optional setting for computer control. it need to add extra fees.



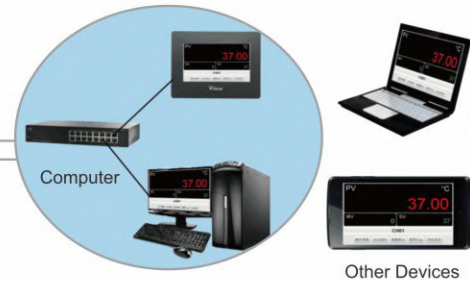
Inside Chamber



PID Controller and Electronics



- 01 Dual-wall Housing
- 02 Lifting System
- 03 Three-step platform
- 04 USB device
- 05 Touch-screen Panel
- 06 Operating Buttons



Intelligent Furnace Remote Control System

Technical Parameters

Model	Volume (L)	Chamber Size Dia*H(mm)	Max Temp(°C)	OperateTemp(°C)	Voltage(V)	Power(KW)	Heating Element	Controller Accuracy
STS-120-12	2 L	Φ120x120	1200°C	1100°C	220 V	2 KW	HRE	±1°C
STS-150-12	3 L	Φ150x150	1200°C	1100°C	220 V	3 KW	HRE	±1°C
STS-200-12	6 L	Φ200x200	1200°C	1100°C	220 V	4 KW	HRE	±1°C
STS-300-12	20 L	Φ300x300	1200°C	1100°C	380 V	6 KW	HRE	±1°C
STS-120-14	2 L	Φ120x120	1400°C	1300°C	220V	3 KW	SIC Rod	±1°C
STS-150-14	3 L	Φ150x150	1400°C	1300°C	220 V	4 KW	SIC Rod	±1°C
STS-200-14	6 L	Φ200x200	1400°C	1300°C	220 V	5 KW	SIC Rod	±1°C
STS-300-14	20 L	Φ300x300	1400°C	1300°C	380 V	6 KW	SIC Rod	±1°C
STS-120-17	2 L	Φ120x120	1700°C	1600°C	220 V	3 KW	Mosi2 Rod	±1°C
STS-150-17	3 L	Φ150x150	1700°C	1600°C	220 V	4 KW	Mosi2 Rod	±1°C
STS-200-17	6 L	Φ200x200	1700°C	1600°C	220 V	4 KW	Mosi2 Rod	±1°C
STS-300-17	20 L	Φ300x300	1700°C	1600°C	380 V	8KW	Mosi2 Rod	±1°C